

 4 bedrooms  3 bathrooms  Double Garage  203.59 Sq M



BRISA ONE DOUBLE GARAGE

INCLUSIONS:

Fixed site cost and BASIX;
2600 mm ceiling ground floor;
Ducted air conditioner;
Down-light package to
Kitchen/Living;
Caeserstone kitchen bench top;
Carpet to bedrooms;
Tiles to Living areas;
Mirrored Sliding robes;
Clothes line and Letter box;
Turf front and backyard;
Colored driveway;
Six months completion;



KEY FACTS

- ✓ Double storey
- ✓ 4 bedrooms
- ✓ 3 bathrooms
- ✓ Double Garage
- ✓ 203.59 Sq M
- ✓ Exterior width 10.36m
- ✓ Exterior length 13.20m

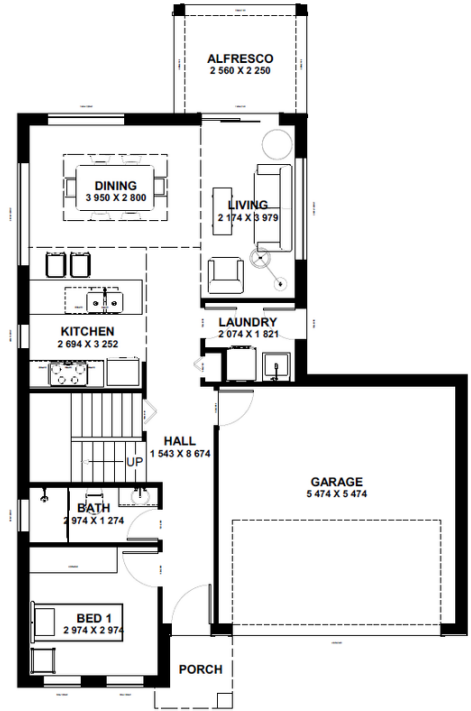
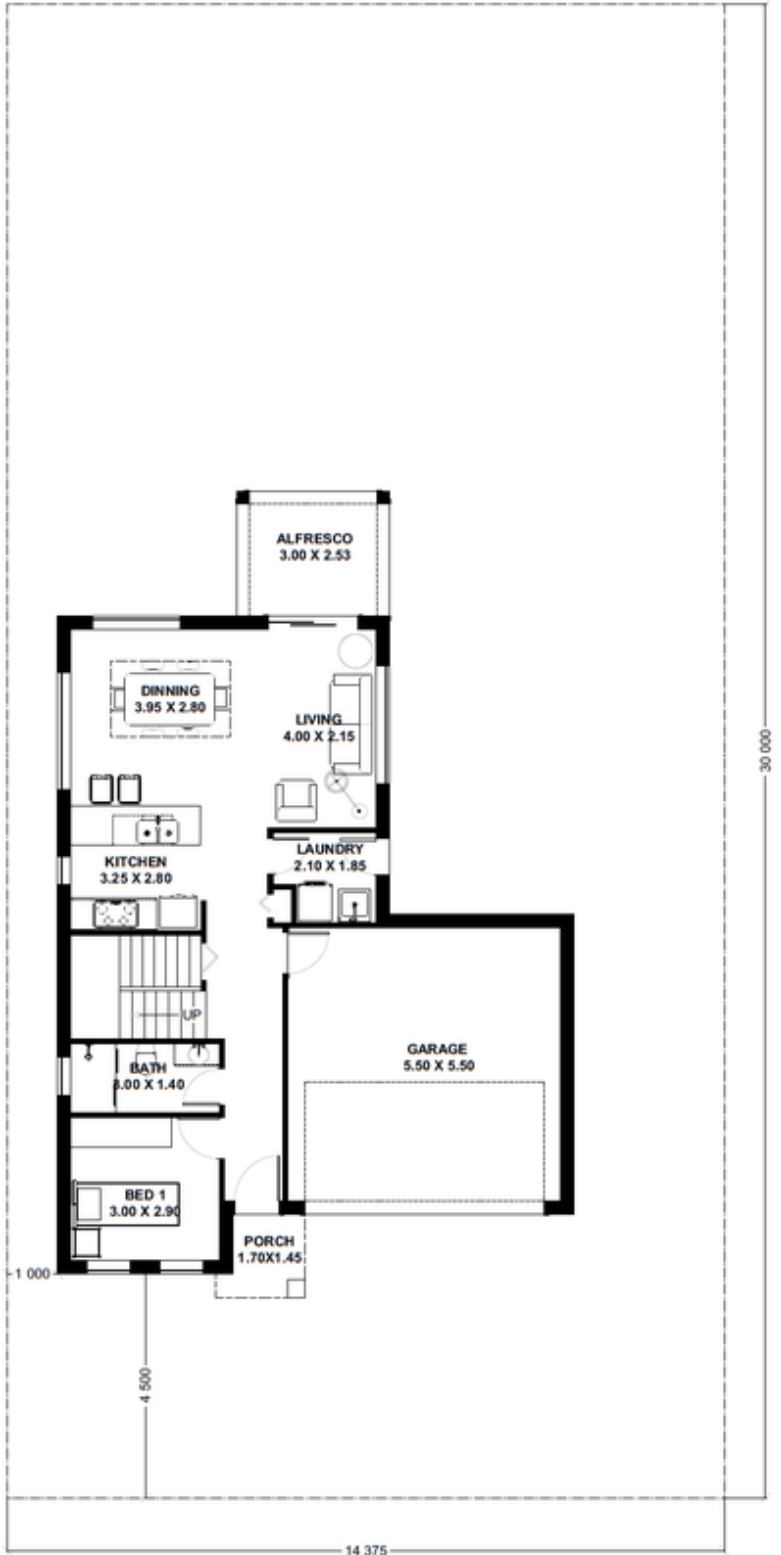
HOUSE SIZE: 203.59 M²
LAND SIZE: 431.20 M²

FLOOR AREAS

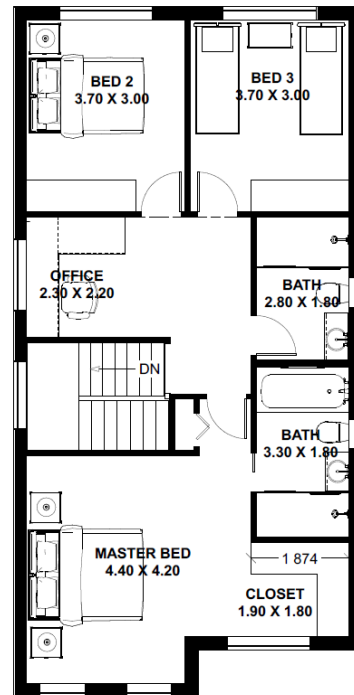
Ground Floor	110.25 sqm
First Floor	85.75 sqm
Alfresco	7.59 sqm

Total Floor Area 203.59 sqm

LAND SIZE: 431.20 SQM



Ground floor



First floor

↔ 10.36 M
 ↑↓ 13.20 M